

Cutsheet - DXL Variable Frequency Drive

INTUITIVELY ENGINEERED



THREE-PHASE | 230 V & 460 V | EASY SETUP WIZARDS
OPEN, & NEMA 1 INDOOR ENCLOSURE | 5 – 500+ HP

DXL INDUSTRIAL VARIABLE FREQUENCY DRIVES



Economical



Large Graphic
Display



Simple
Constant
Pressure Setup



Simple
Installation



Commercial
Applications

Phase Conversion

Single-Phase to Three-Phase

Convert single-phase power to three-phase power while maintaining across the line voltage with advanced motor control capabilities.



Simple Keypad & Easy Setup Wizards



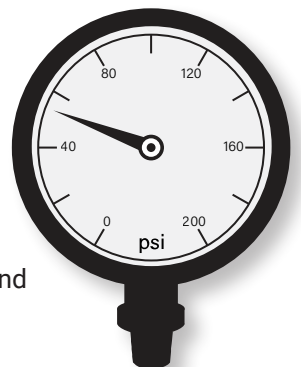
Simple Keypad

- ▶ Identical Keypad and Setup Across All Models
- ▶ Bright & Readable Screen
- ▶ Prompts & Messages in Clear Language
- ▶ Perfect Pressure
 - Quick and Easy Constant Pressure Setup

Easy Setup Wizards

System setup with **Perfect Pressure** requires only a few minutes and is capable of controlling complicated pump systems with ease.

Additional Easy Setup Wizards can be found on our website for more easy setup options available on the DX.



DXL

INDUSTRIAL
VARIABLE FREQUENCY DRIVES



Features

Economical

Phase Technologies DXL VFD packs the punch you expect from an industrial drive without the large price tag. Take advantage of easy serviceability and straightforward installation.

Small Footprint

Enjoy all the benefits of industrial three-phase motor control without the huge footprint of other drive manufacturers.

Serviceability

With a smaller footprint and fewer internal components, our DXL VFD has become very simple to service and work on yourself. The modular design allows for easy swapping of parts in addition to a simple installation experience.

Phase Converting

The DXL has phase converting capabilities see derate information in product manuals.



VISIT OUR WEBSITE FOR MORE INFO
PHASETECHNOLOGIES.COM

Cutsheet - DXL Series v3.7_04072026



Product Specifications

Model / Part Number	HP	Rated Current (Input)	Rated Current (Three-Phase Output)	Rated Current (Single-Phase Input)	I/O Configuration
230 V					
DXL005	5	18 A	18 A	11 A	#1*
DXL007	7.5	25 A	24.5 A	15 A	#1*
DXL010	10	31 A	31 A	18 A	#1*
DXL015	15	46 A	46 A	24 A	#2
DXL020	20	61 A	61 A	31 A	#2
DXL025	25	75 A	75 A	38 A	#2
DXL030	30	91 A	91 A	46 A	#2
460 V					
DXL405	5	9 A	9 A	5 A	#1*
DXL407	7.5	13 A	13 A	7 A	#1*
DXL410	10	18 A	18 A	9 A	#1*
DXL415	15	25 A	25 A	15 A	#1*
DXL420	20	31 A	31 A	18 A	#2
DXL425	25	38 A	38 A	20 A	#2
DXL430	30	46 A	46 A	22 A	#2
DXL440	40	61 A	61 A	25 A	#2
DXL450	50	77 A	77 A	33 A	#2
DXL460	60	86 A	91 A	38 A	#2
DXL475	75	101 A	107 A	40 A	#2
DXL4100	100	134 A	142 A	46 A	#2
DXL4125	125	163 A	172 A	67 A	#2
DXL4150	150	188 A	198 A	77 A	#2
DXL4200	200	237 A	250 A	88 A	#2
DXL4250	250	288 A	304 A	107 A	#2
DXL4300	300	346 A	365 A	122 A	#2
DXL4350	350	394 A	415 A	139 A	#2
DXL4400	400	454 A	478 A	160 A	#2
DXL4500	500	560 A	590 A	197 A	#2

* I/O Configuration #2 is also available.



PRODUCT BUILDER

PHASETECHNOLOGIES.COM/PRODUCTS



UP-TO-DATE

- ✓ LEAD TIMES
- ✓ PRICING
- ✓ DIMENSIONS

I/O Configuration	#1	#2
Aux	3	4
Relays	1 NO, NC, 1 NO	1 NO, NC, 1 NO
4-20 mA (IN)	2	2
0-10 VDC (IN)	1	1
4-20 mA (OUT)	-	1
0-10 VDC (OUT)	-	1
Modbus	2/4 Wire	2/4 Wire, Ethernet
Remote Display	Yes	Yes